

INSTRUMENT
APPROACH
CHART - ICAO

ILS
LLZ 111.3
IAA
GP 332.3
CH 50X

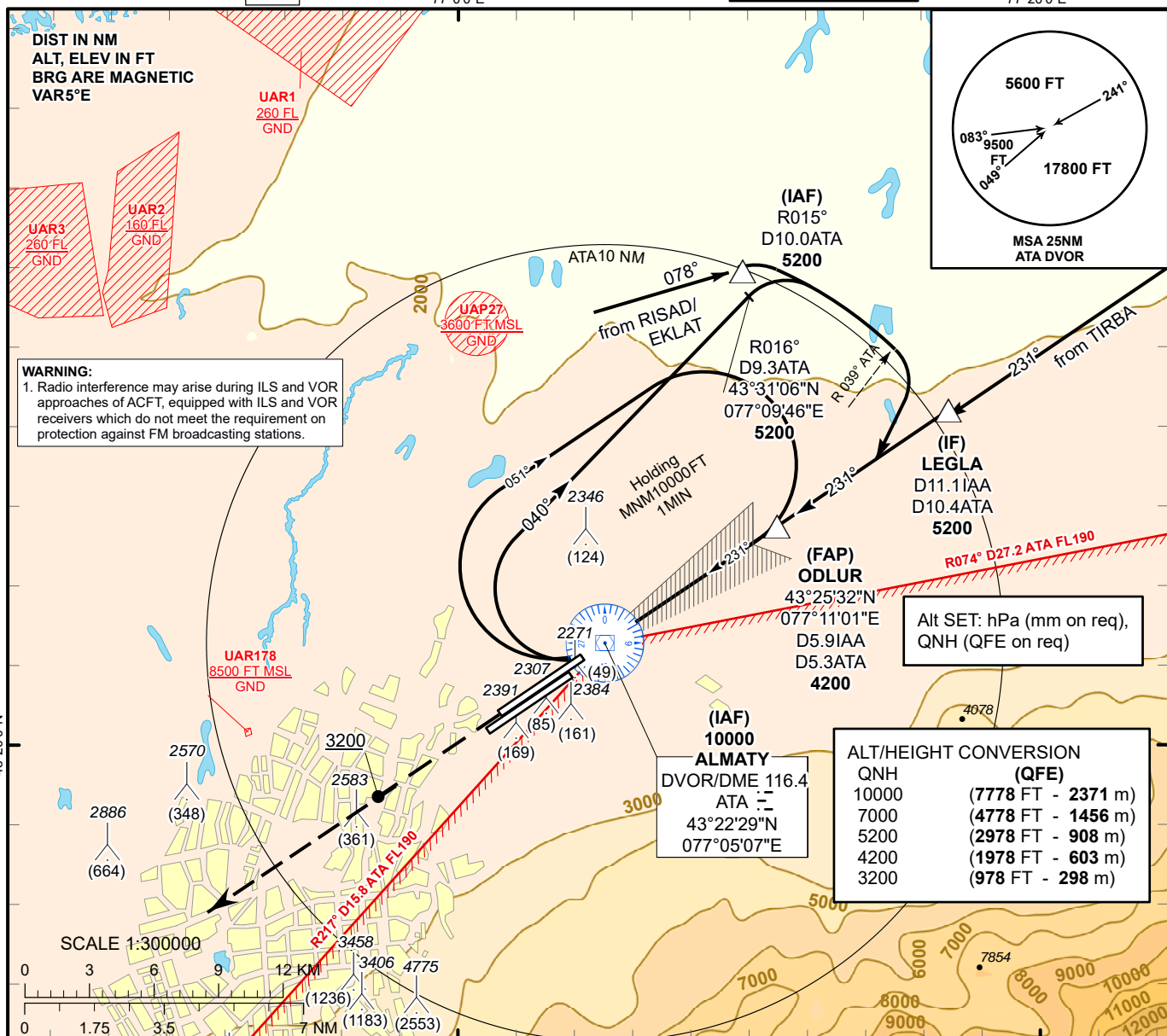
AERODROME ELEV **2238 FT**
HEIGHTS RELATED TO
THR RWY 23R - ELEV **2222 FT**

ALMATY APPROACH 118.3
ALMATY RADAR 126.8
ALMATY TOWER 119.4
ALMATY ATIS (EN) 129.8
ALMATY ATIS (RU) 135.1

ALMATY
ILS/DME Z CAT II & III
RWY 23R

77°00'E

77°20'E



MISSED APPROACH

Climb on track 231° to 5200.
After passing 3200 radar vectoring will be provided.

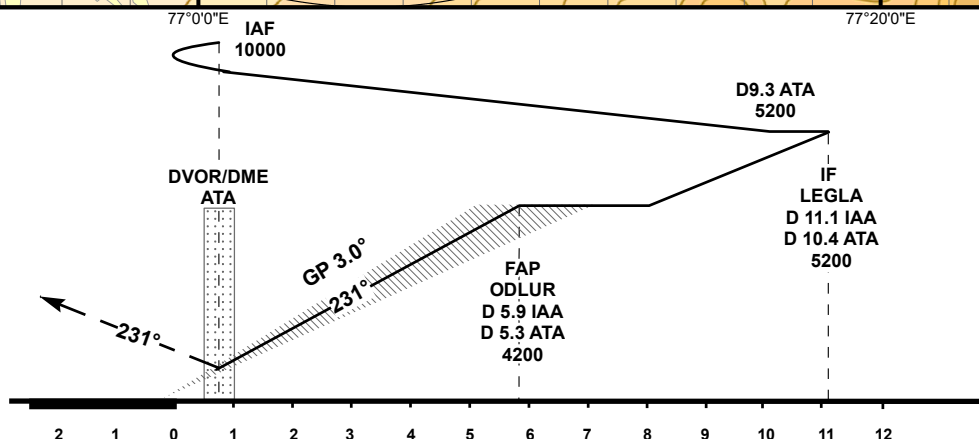
RADIO FAILURE:

In case of RCF climb on track 231° to 5200 FT, turn RIGHT to ATA, but not earlier than 6.5 NM ATA.
Climb to 10000 FT (not below) to ATA and join to holding pattern.

TRANSITION ALT
10000

ILS RDH 54

ELEV 2222
THR RWY 23R



CHANGE: APP FREQ.

Aircraft Category		A	B	C	D	DIST to THR DME IAA	NM	1	2	3	4	5	5.9
Straight-in Approach OCA/H	CAT I	2422(200)	2422(200)	2422(200)	2422(200)	DME ATA	NM	0.3	1.3	2.3	3.3	4.3	5.3
	CAT II	2322(100)	2322(100)	2322(100)	2322(100)	ALTITUDE	FT	2595	2916	3239	3563	3890	4200
	CAT III	CAT III approved				HEIGHT	FT	373	694	1017	1341	1668	1978
						DME IAA ZERO RANGED TO THR RWY 23R							
Aerodrome Operating Minima DH ft x RVR(CMV)	CAT I												
	CAT II												
	CAT III A					GS	Kt	80	100	120	140	160	180
	CAT III B					Desc.Rate (5.2%)	ft/min	420	530	630	740	840	950

ALMATY
ILS/DME Z CAT II, III

AERONAUTICAL DATA TABULATION

ILS approach to RWY23R from ATA DVOR/DME, LEGLA	
Fix/point	Coordinates
ATA DVOR/DME	43° 22' 29.4"N 077° 05' 07.0"E
IAA D5.9 ATA D5.3 (FAP ODLUR)	43° 25' 32.4"N 077° 11' 01.0"E
LEGLA (IF) IAA D11.1 ATA 10.4	43° 28' 25.5"N 077° 16' 54.3"E
R 015° D10.0 ATA (IAF)	43° 31' 55.5"N 077° 09' 49.0"E
THR RWY 23R	43° 22' 12.33"N 077° 04' 16.00"E
IAA LOC	43° 20' 37.6"N 077° 01' 04.8"E